



Grade 3

WORLD SCIENCE CHAMPIONSHIP

2024

Total Questions: 35

Total Marks: 35

Time: 1hr

Set: B

General Instructions for the Examinee

Opening Instructions:

Welcome to the world Maths Championship. Before we commence, please pay close attention to the following instructions:

- Electronic devices such as cell phones and MP3 players must be turned off.
- Do not share or exchange materials with other students.
- Unauthorized aids are strictly prohibited and its use can lead to disqualification.
- Calculators are not allowed for Grade 1-5
- Scientific Calculators are allowed for Grade 6-8
- Refrain from consulting notes, textbooks, teachers, or other students regarding the exam materials.

Instructions for Filling Student Details in OMR Sheet and Signing the Attendance sheet:

There will be a ten-minute break for students to fill in the details

Filling Student Details:

- Please refer to the instructions at the back of the OMR sheet for proper completion your details.

Signing Attendance sheet:

- Ensure you have signed the attendance sheet and OMR sheet provided.
- Invigilator should also sign your OMR sheet in the space provided.

marks - Total 35 marks.

- Grades 5 to 8: 50 questions of 1 mark each, there is no negative marking and if you skip/leave a question no marks will be given but also no marks will be deducted as -ve marks - Total 50 marks.

- Darken the circle corresponding to your chosen answer on the OMR sheet.
- Ensure you darken circles completely. Questions that do not have the darker circle are considered unanswered and will be counted wrong.
- You have 60 minutes to complete the exam.
- Note that you can choose only one answer – if you mark another response, that question will be disqualified.
- If you finish before the time is up, raise your hand, and the invigilator will collect your sheet for scoring. When you are finished and your OMR Sheet is collected, please leave the room quietly.

Instruction for Taking Examination:

- The question paper has been sealed by a reverse jacket. You have to cut on the right side to open the paper at the time of commencement of the examination. Check whether all the pages of the question paper are intact.
- This Examination is multiple-choice based, with either 4 options, 3 options or 2 options for each question.
- Each grade level has specific question formats and durations:
 - Grades 1 to 4: 35 questions of 1 mark each, there is no negative marking and if you skip/leave a question no marks will be given but also no marks will be deducted as -ve

Thank you for your attention, and best of luck with the World Maths Championship!

Question: 1 of 35

QID: 598

Marks : 1

Which material is this shield made of?



- A. Metal B. cardboard

Question: 2 of 35

QID: 600

Marks : 1

Which material is this slide made of?







- A. plastic B. rock

Question: 3 of 35

QID: 617

Marks : 1

Select the liquid.

- A.  apple juice B.  coins
- C.  tortoise shell D.  air inside a tire

Question: 4 of 35

QID: 619

Marks : 1

Is a pair of scissors a solid, a liquid, or a gas?



- A. a solid B. a liquid
- C. a gas

Question: 5 of 35

QID: 1672

Marks : 1

Select the arrow that shows freezing.



- A. a liquid to ice B. ice to liquid

Question: 6 of 35

QID: 1809

Marks : 1

Select the phase change that shows melting.

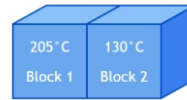
- A. ice to water liquid B. water liquid to ice

Question: 7 of 35

QID: 656

Marks : 1

Two identical blocks are heated to different temperatures. The blocks are placed so that they touch each other. Heat can flow from one block to another but cannot escape from the blocks. Later, the temperature of each block is measured again. Which pair of temperature is possible?



- A.  B. 

Question: 8 of 35

QID: 657

Marks : 1

Which object has less thermal energy? The objects are identical except for their temperatures.

- A. a 100-gram mug of cider at a temperature of 50 deg C B. a 100-gram mug of cider at a temperature of 60 deg C

Question: 9 of 35

QID: 673

Marks : 1

Complete the sentence. Water evaporating from a puddle a _____.

- A. physical change B. chemical change

Question: 10 of 35

QID: 674

Marks : 1

Complete the sentence. pouring milk on oatmeal is a _____.

- A. physical change B. chemical change

Question: 11 of 35

QID: 1673

Marks : 1

Select the two mixtures.



- A. soup, platinum B. soup, mud
- C. mud, platinum

Question: 12 of 35

QID: 2150

Marks : 1

Select the two mixtures.



- A. block, coins B. coins, sugar
- C. sugar, coins

Question: 13 of 35

QID: 683

Marks : 1

A student types on a keyboard. Her finger applies a force to a key. Which type of force from the student's finger presses the key on the keyboard?



- A. push B. pull

Question: 14 of 35

QID: 703

Marks : 1

The text below describes a pair of opposing forces. Opposing forces act on an object in opposite directions. Read the text. Then answer the question below.

Ivan uses his umbrella on a windy day. Think about two of the forces that act on the umbrella: Ivan pulls toward himself. The wind pushes away from Ivan. As the wind pushes on the umbrella, what is the direction of the opposing force?



- A. away from Ivan B. towards Ivan

Question: 15 of 35

QID: 2166

Marks : 1

All matter is made of atoms. Atoms are very small pieces of matter. But they are not the smallest pieces of matter. Atoms are made of even smaller pieces, or particles. Some of these particles have a property called electric charge. There are two types of electric charge: positive and negative. Particles with a positive electric charge are called positive charges. Particles with a negative electric charge are called negative charge. Which of the following statements are true?

- A. Electric charge can be positive or negative. B. The smallest piece of matter is called an atom.
- C. Particles with any electric charge are called positive change.

Question: 16 of 35

QID: 2171

Marks : 1

Atoms are so small that they cannot be seen without a special microscope. The positive charge and negative charge in atoms are even smaller!

To show charges, scientists often use models. A model is a tool used to make things in real life easier to understand. Models can show things in nature or things made by people. This drawing is a model of the charges a balloon has. It shows positive charges as +, or plus, signs. It shows negative charges as -, or minus, signs. This model shows which types of charges the balloon has. It also shows which type of charges the balloon has more of. But this model does not show all of the balloon's charges.

A real balloon has many more charges than you can count. This is because real objects have many atoms. Just one grain of sand may have more than 10,000,000,000,000,000 atoms! And each atom has positive and negative charges. What does this model show?



- A. This model shows the real size and shape of the balloon's charges. B. This model shows that the balloon has both positive and negative charges.
- C. This model shows all of the balloon's charges.

Question: 17 of 35

QID: 1681

Marks : 1

Two magnets are placed as shown. Will these magnets attract or repel each others?



- A. attract B. repel

Question: 18 of 35

QID: 2184

Marks : 1

Two magnets are placed as shown. Will these magnets attract or repel each other? Hint: Magnets that repel push apart.



- A. attract B. repel

Question: 19 of 35

QID: 1684

Marks : 1

Which organ pull on bones to move the body?

- A. muscles B. stomach
- C. heart

Question: 20 of 35

QID: 2202

Marks : 1

Which organ gives the body its shape?

- A. heart B. skeleton
- C. head

Question: 21 of 35

QID: 734

Marks : 1

Select the living thing

 A.

bathtub

 B.

cobra

Question: 27 of 35

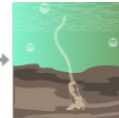
QID: 1696

Marks : 1

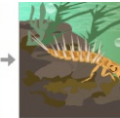
In this food chain, sludge worm is a consumer. Why?



macroalgae



sludge worm



alderfly nymph

 A.

it produces its own food.

 B.

it consumes macroalgae.

Question: 22 of 35

QID: 735

Marks : 1

Select the plant.

 A.

Pumpkin vines have large flat leaves.

 B.

Hummingbirds walk and fly.

 C.

Lynx eat animals.

 D.

Komodo dragons eat animals.

Question: 28 of 35

QID: 1697

Marks : 1

Quartzite is a type of rock. It forms when sandstone is changed by heating and squeezing. Quartzite is used to make floors, roofs, and kitchen counters.

 A.

metamorphic rock

 B.

igneous

Question: 23 of 35

QID: 1685

Marks : 1

What is the name of the process plants use to make food?

 A.

photosynthesis

 B.

pollination

 C.

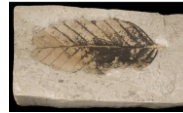
germination

Question: 29 of 35

QID: 1700

Marks : 1

This picture shows a fossil of fagus, a plant that grew in ancient forests. The fossil shows one of the fagus's leaves.



Which traits did fagus have? Select the traits you can observe on the fossil.



orange fruit



oval-shaped leaves



thorns along the sides of each leaf

 A.

oval shaped leaves

 B.

orange fruit

 C.

thorns along the sides of each leaf

Question: 24 of 35

QID: 2238

Marks : 1

This photography shows a wood mouse. Which trait does this wood mouse have?

 A.

It has two ears.

 B.

It has a white nose.

 C.

It has no legs.

Question: 30 of 35

QID: 1701

Marks : 1

Select the part of the passage below that describes the weather. Hint: Weather is what the atmosphere is like at a certain place and time.

Sahara Desert

The Sahara desert covers a large part of northern Africa. It is a dry place, receiving only a small amount of rainfall each year. In 1984, the Sahara received less than one inch of rain over the entire year!

 A.

weather

 B.

climate

Question: 31 of 35

QID: 1707

Marks : 1

A river is water that moves in a line across the land. Rivers are long. They carry water from one place to another. Select the river.

 A.

a

 B.

b

Question: 26 of 35

QID: 1702

Marks : 1

Is the following trait inherited or acquired? Cindy has a scar on her left leg. Hint: Most scars are caused by accidents during a person's life.

 A.

inherited

 B.

acquired

Question: 32 of 35

QID: 1708

Marks : 1

Which change best matches the sentence? The ground in an area shakes.

 A.

erosion

 B.

flood

 C.

earthquake

Question: 33 of 35

QID: 1712

Marks : 1

This picture was taken high above Earth's surface. It shows Hurricane Isabel over the southeastern United State and the Gulf of Mexico. A hurricane is a large storm with strong wind and heavy rain. Clouds spiral around the center of the hurricane.

In the picture, you can see green land, dark blue water, and the white spiral-shaped clouds of the hurricane.



What is true about hurricanes? Select all that apply.

- Hurricanes can be found only over ocean water.
- Hurricanes can be found only over land.
- Hurricanes are large spiral-shaped storms.

- A.** Human can be found only over ocean water
- B.** Hurricanes can be found only over land.
- C.** Hurricanes are large spiral-shaped storms.

Question: 34 of 35

QID: 1714

Marks : 1

How long is a car key? Select the better estimate.

- A.** 3 inches
- B.** 3 feet

Question: 35 of 35

QID: 1827

Marks : 1

How long does it take to paint the walls in a bedroom? Select the better estimate.

- A.** 3 minutes
- B.** 3 hours

--- END OF QUESTION PAPER ---